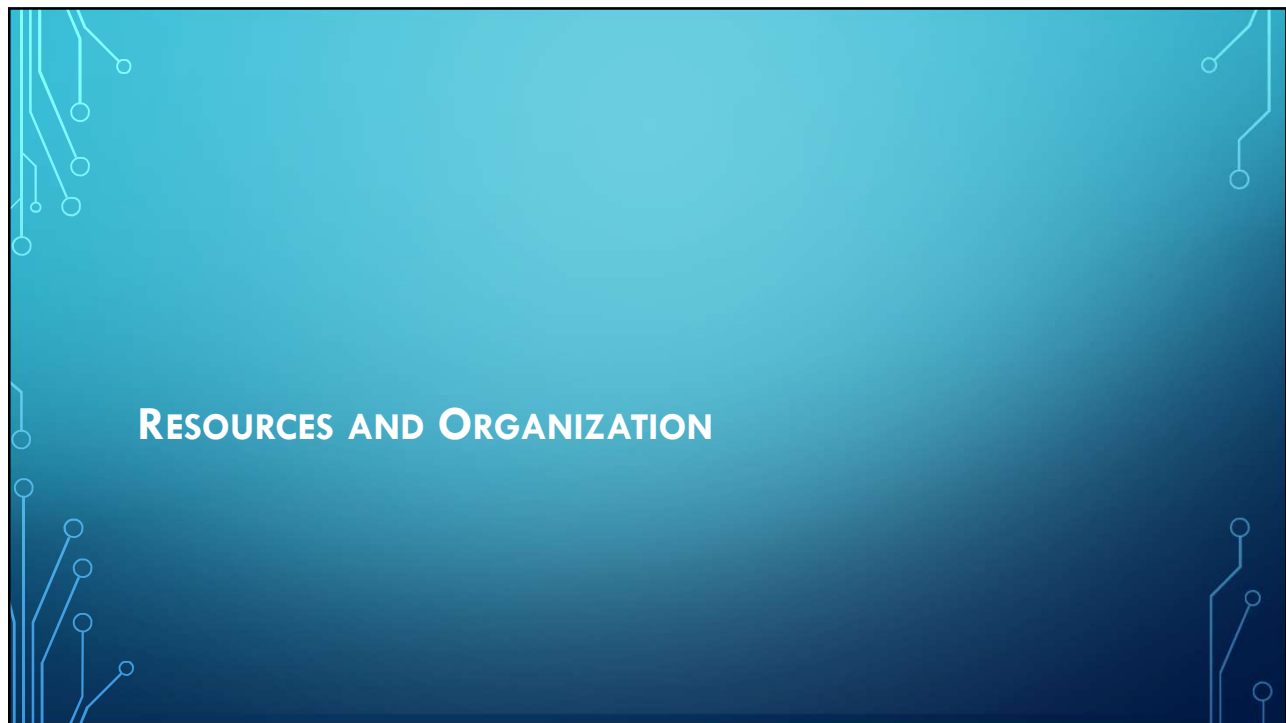


1



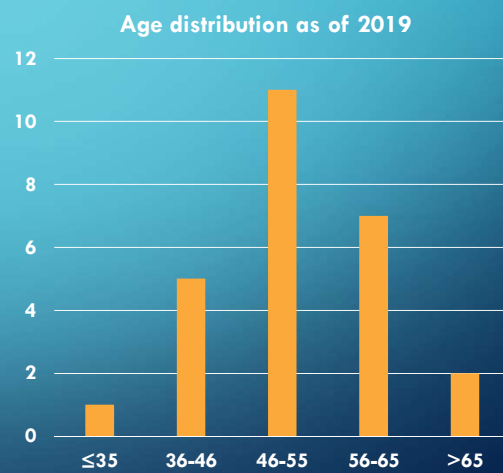
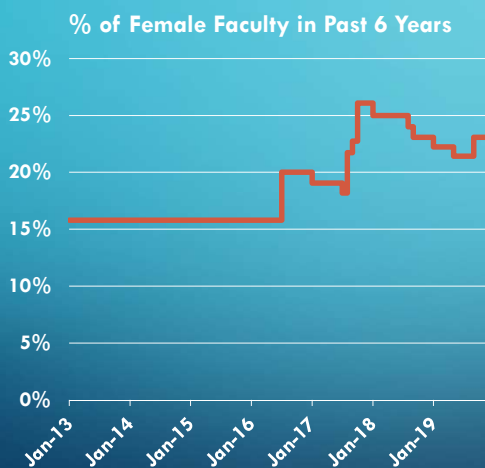
2

## FACULTY

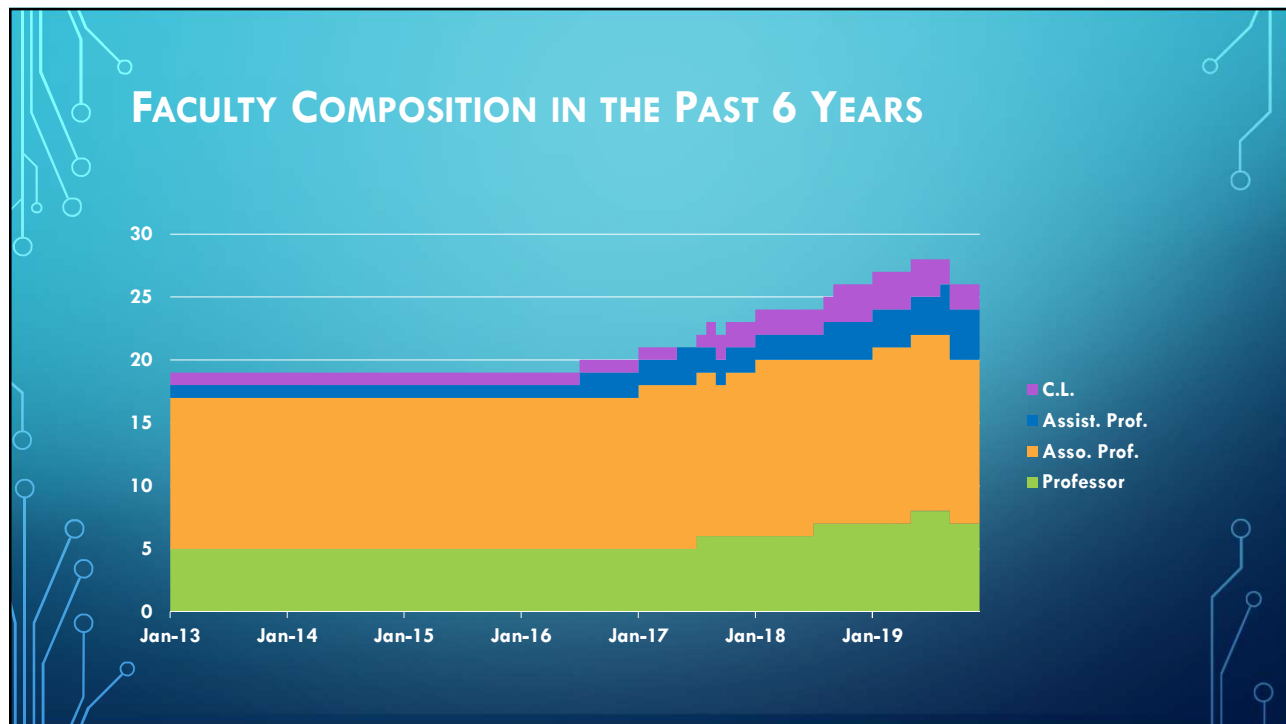
- SoCS currently has 26 faculty members
  - 2 teaching-focused Contractually Limited (CL) members
  - 4 tenure-track Assistant Professors
  - 13 Associate Professors
  - 7 Professors
- Changes in near future:
  - One faculty members is scheduled to retire in January 2020
  - 2 positions (one for CARE-AI) are being filled

3

## SoCS FACULTY DEMOGRAPHICS



4



5

## STAFF

- **SoCS currently hosts 8.6 FTE staff members**
  - An Administrative Officer
  - An Undergraduate Program Counsellor
  - An Instructional Support Coordinator
  - A Recruitment and Outreach Officer
  - 2 IT Analyst III
  - 2 Program Assistants for undergraduate & graduate programs, respectively
  - An Administrative Support Clerk (part-time)

6

## ADDITIONAL INSTRUCTIONAL SUPPORT

- SoCS has been using TAs for many instructional related tasks
  - Grading assignments/exams, tutoring students in labs, & administrating academic integrity
  - Brings high administrative overhead for planning, advertising, interviewing, and filling TA positions
- An Instructional Support Coordinator was hired last year
  - 50% capacity for academic integrity responsibility
  - Moved toward full-time TA and lab management this year

7

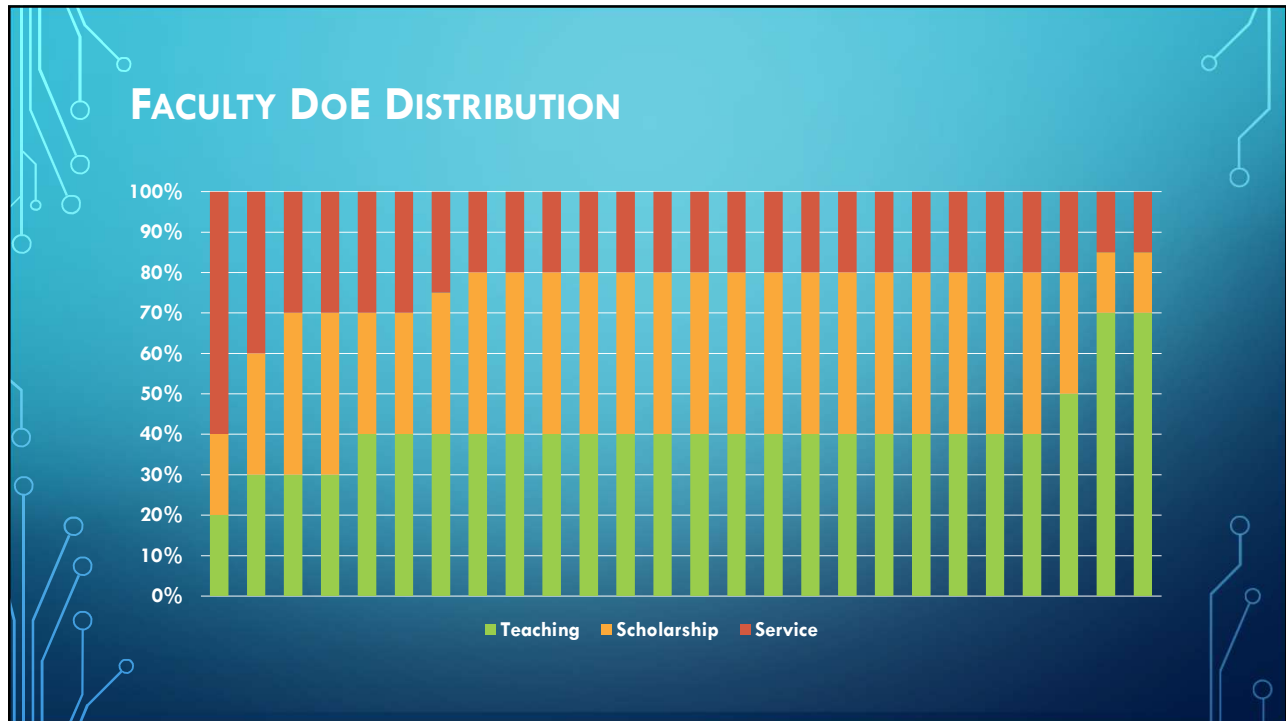
## SoCS ORGANIZATION CHART



8



9



10

## EQUITABLE TEACHING WORKLOAD

- Some SoCS undergraduate lecture courses have 0.75 credits
  - Heavier project or group work component in these courses
- Some courses require faculty to actively participate in labs
- Efforts for developing & teaching a new course is not formally recognized
  - The Director at the time normally provides teaching credit for such efforts
- Preparatory work for offering a course for the 1<sup>st</sup> time is not recognized
  - CA for CUPE 3913 defines the supplemental payment
- Class size differences are not considered

11

## SPACE USAGE IN REYNOLDS

Room location	Room function	# of seats
Reynolds 0002	General teaching lab	48
Reynolds 0001	Shared TA office	23
Reynolds 0003	Shared TA office	20
Reynolds 0004	Postdoc and sessional office	20
Reynolds 1101	Classroom	48
Reynolds 1103	Boardroom	8
Reynolds 2224/3324	Boardroom (2)	12 each
Reynolds 2206/3306	Research lab (2)	6 each
Reynolds 2207/3307	Graduate student office (2)	15 each
Reynolds 2221	Graduate student office	24
Reynolds 3321	Cybersecurity teaching lab	36

12

