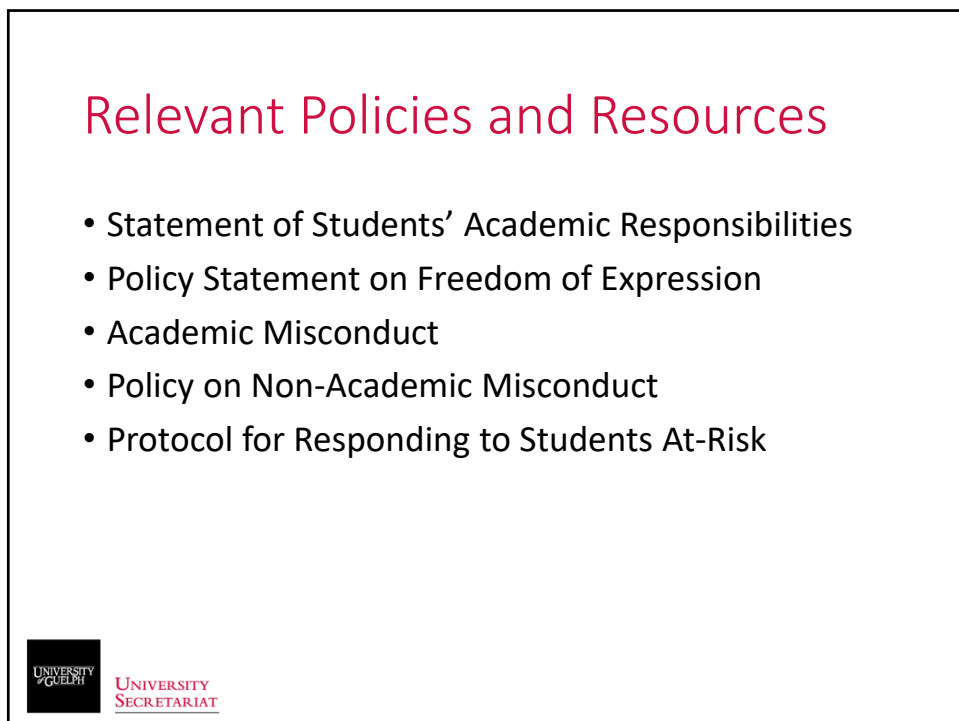




1



2

Statement of Students' Academic Responsibilities

"Adhering to any rules of conduct including those relating to health and safety provided by an instructor or assistant, either on a course outline or in a class, laboratory or seminar."¹

Policy Statement on Freedom of Expression

"The University retains the ability to reasonably manage the time, place and manner of expression and the use of University resources by members of the University community and the general public. The University reserves the right to restrict expression that it reasonably believes violates laws, creates safety concerns or disrupts the normal functioning of the University."²



UNIVERSITY
SECRETARIAT

¹ <https://www.uoguelph.ca/registrar/calendars/undergraduate/current/c01/index.shtml>

² <https://www.uoguelph.ca/freedom-of-expression/policy>

3

Academic Misconduct

"Academic misconduct is behavior that erodes the basis of mutual trust on which scholarly exchanges commonly rest, undermines the University's exercise of its responsibility to evaluate students' academic achievements, or restricts the University's ability to accomplish its learning objectives."¹

Policy on Non-Academic Misconduct

Diversity, Integrity, Learning, Safety



UNIVERSITY
SECRETARIAT

¹ <https://www.uoguelph.ca/registrar/calendars/undergraduate/current/c08/c08-amisconduct.shtml>

4

Protocol for Students At-Risk

- Student At Risk Team (SART)
- Disruptive vs disturbing behaviour
- Triage and Support



UNIVERSITY
SECRETARIAT

5

Resolution Processes

- Informal conversations
 - Instructor – Student
 - Chair – Student
 - ADA/Dean – Student
- Formal processes
 - Academic misconduct investigation
 - Policy on Non-Academic Misconduct
 - Interim suspension (VPSA)
 - Protocol for Responding to Students At-Risk



UNIVERSITY
SECRETARIAT

6

Considerations

- What is the behavior?
 - Disruption? Human Rights Violation? Harassment?
- What remedy is most appropriate?
 - Education? Fines? Loss of grades? Restrictions on access?
- Are there any student-specific considerations?
 - Student's mental health? Student's typical behavior?



UNIVERSITY
SECRETARIAT

7

Immediate Responses to Classroom Disruptions

- Asking the student to conform to class expectations of behavior
- Asking the student to leave the classroom
- Call Campus Community Police (CCP) to assist in removal of student from classrooms if the student refuses to leave on their own
- Alternatively, cancel the class



UNIVERSITY
SECRETARIAT

8

Examples

- Student refusing to allow class to continue
 - Informal resolution, Academic Misconduct
- Racist content
 - Complaint filed under the Policy on Non-Academic Misconduct (consult with DHR)
- Student outburst in class related to mental health
 - Connection with Counselling Services or SART



UNIVERSITY
SECRETARIAT

9

Contact us

Kristin Ingoldsby

Assistant University Secretary & Privacy/Judicial Officer

k.ingoldsby@exec.uoguelph.ca

Kristin Lennan

Student Conduct and Support Manager

lennank@uoguelph.ca



UNIVERSITY
SECRETARIAT

10