

# SoCS Council Meeting

October 17, 2017

## **AGENDA**

1. Approval of Agenda
2. Approval of Minutes from Sep 19, 2017
3. Interim Director's Remarks — Pascal
4. School T&P Guidelines — Pascal
5. Undergraduate Recruitment and Outreach — Lauren
6. Graduate Outreach Committee — Charlie
7. Strategic Planning Committee — Dan
8. Any other business

### 3. INTERIM DIRECTOR'S REMARKS

### 3. INTERIM DIRECTOR'S REMARKS: Student representatives

Patrick Houlding  
James Fraser

### 3. INTERIM DIRECTOR'S REMARKS: UGFA strike vote

## Time-limited Strike Authorization Vote

Dear Member:

Your Negotiation Team needs your support. As we enter mediation on October 21/22, a strong strike mandate will help us to reach a fair and reasonable agreement with the mediator.

This strike vote will be active from 4:00 p.m. today (Monday October 16th) until 4:00 p.m. tomorrow (Tuesday October 17th). Please take a moment to cast your vote and be heard.

Ed Carter, Chief Negotiator  
Ibrahim Deiab  
Mary DeCoste  
Herb Kunze  
Susan Hubers  
Jonathan Ferris  
Denise Sanderson

[Vote Now](#)

### 3. INTERIM DIRECTOR'S REMARKS: Director's position

internal



external



- a) I would prefer an internal search
- b) I would prefer an external search
- c) Either way

### 3. INTERIM DIRECTOR'S REMARKS: CL position in cyber security

- Faculty Search Committee has been formed  
(Pascal, Deb, Charlie, Rozita, Dave Whittle, Jarrett Phillips)
- Request to recruit and advertise has been approved
- Job announcement has been posted at *computeroxy.com*
- Will soon be posted on UoG's Faculty Recruitment site
- Deadline is Nov 12, 2017; start date is May 1, 2018

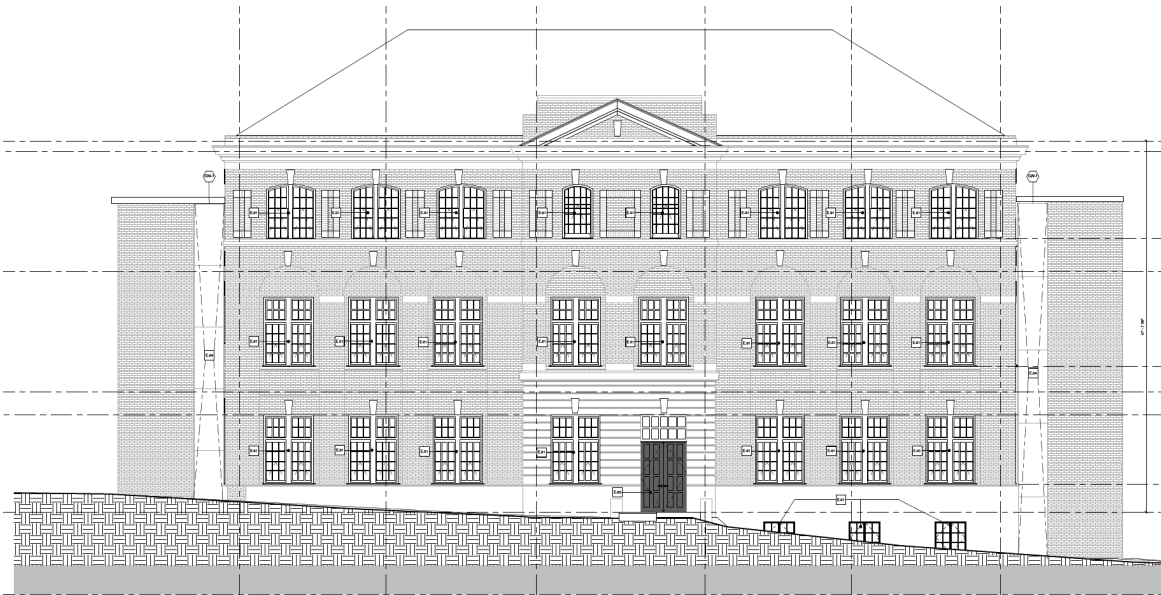
### 3. INTERIM DIRECTOR'S REMARKS: Multisection courses

- CIS\*1500 (3 sections in F and 1 in W, since F14)
- CIS\*2500 (2 sections in W, since W17)
- CIS\*1910 (2 sections in W, starting W18)
- CIS\*2750 (1 section in F and 2 in W, starting W18)
- **NEW!** CIS\*2030 (2 sections in F, starting F18)
- **NEW!** CIS\*2430 (2 sections in F, starting F18)
- **NEW!** CIS\*2520 (2 sections in F, starting F18)
- CIS\*3750 (1 section in F and 1 in W, starting F18)

#### *Note*

Anticipated number of TBA sections in 2018-19:  
6 to 8 (not counting CIS\*1000 and CIS\*1200)

### 3. INTERIM DIRECTOR'S REMARKS: Reynolds



1 office for Director  
10 offices for staff

2 offices unoccupied

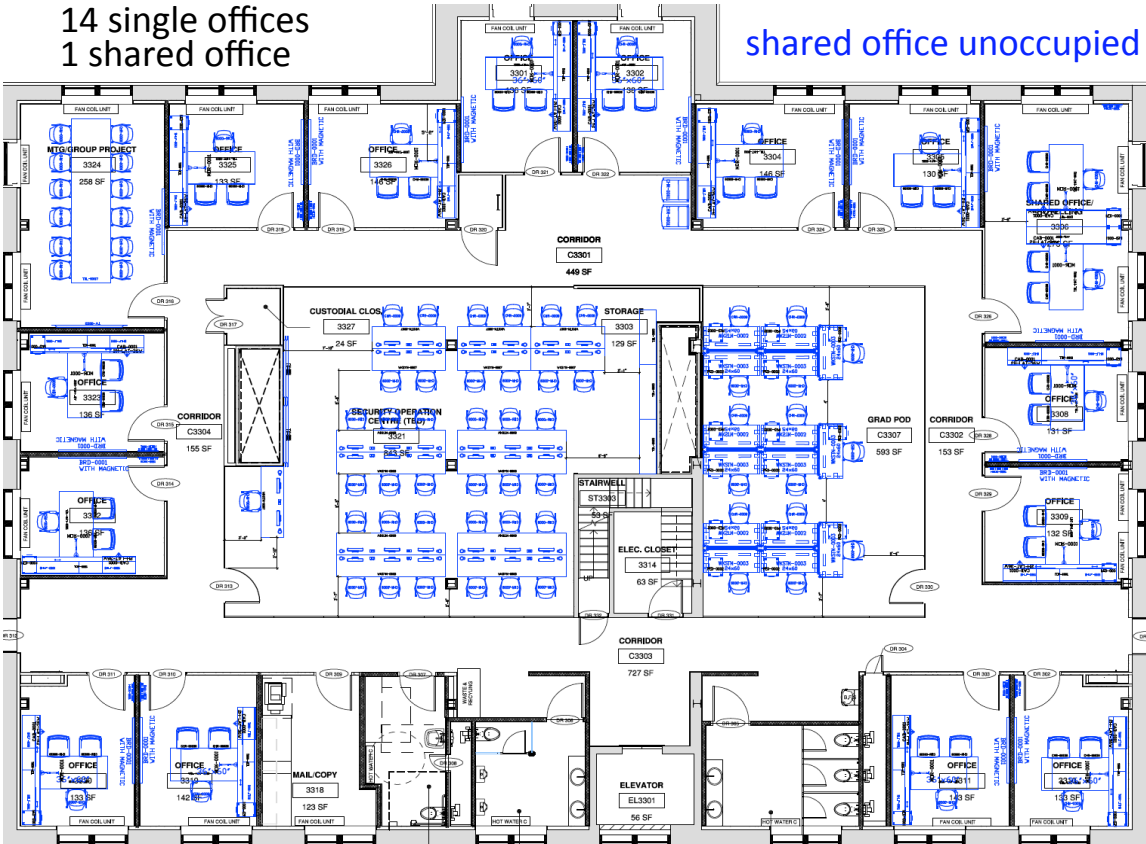
Key rooms and areas shown include:

- DIR. OFFICE (1117, 213 SF)
- ADMIN. OFFICE (1118, 293 SF)
- ADMIN. OFFICE SUITE (C1117, 293 SF)
- RECEPTION (1119, 36 SF)
- MAIL/COPY ROOM (1120, 109 SF)
- STORAGE (1121, 47 SF)
- CORRIDOR (C1102, 608 SF)
- MEETING (1103, 244 SF)
- KITCHENETTE (1102, 264 SF)
- SEMINAR ROOM (1101, 797 SF)
- UNIVERSAL W.C. (W1107, 80 SF)
- STORAGE (1111, 30 SF)
- MW VESTIBULE (WW110A, 32 SF)
- STORAGE (1112, 32 SF)
- OFFICE (1114, 139 SF)
- OFFICE (1115, 139 SF)
- OFFICE (1116, 139 SF)
- OFFICE (1117, 139 SF)
- OFFICE (1118, 139 SF)
- OFFICE (1119, 139 SF)
- OFFICE (1120, 139 SF)
- OFFICE (1121, 139 SF)
- OFFICE (1122, 139 SF)
- OFFICE (1123, 139 SF)
- OFFICE (1124, 139 SF)
- OFFICE (1125, 139 SF)
- OFFICE (1126, 139 SF)
- OFFICE (1127, 139 SF)
- OFFICE (1128, 139 SF)
- OFFICE (1129, 139 SF)
- OFFICE (1130, 139 SF)
- OFFICE (1131, 139 SF)
- OFFICE (1132, 139 SF)
- OFFICE (1133, 139 SF)
- OFFICE (1134, 139 SF)
- OFFICE (1135, 139 SF)
- OFFICE (1136, 139 SF)
- OFFICE (1137, 139 SF)
- OFFICE (1138, 139 SF)
- OFFICE (1139, 139 SF)
- OFFICE (1140, 139 SF)
- OFFICE (1141, 139 SF)
- OFFICE (1142, 139 SF)
- OFFICE (1143, 139 SF)
- OFFICE (1144, 139 SF)
- OFFICE (1145, 139 SF)
- OFFICE (1146, 139 SF)
- OFFICE (1147, 139 SF)
- OFFICE (1148, 139 SF)
- OFFICE (1149, 139 SF)
- OFFICE (1150, 139 SF)
- OFFICE (1151, 139 SF)
- OFFICE (1152, 139 SF)
- OFFICE (1153, 139 SF)
- OFFICE (1154, 139 SF)
- OFFICE (1155, 139 SF)
- OFFICE (1156, 139 SF)
- OFFICE (1157, 139 SF)
- OFFICE (1158, 139 SF)
- OFFICE (1159, 139 SF)
- OFFICE (1160, 139 SF)
- OFFICE (1161, 139 SF)
- OFFICE (1162, 139 SF)
- OFFICE (1163, 139 SF)
- OFFICE (1164, 139 SF)
- OFFICE (1165, 139 SF)
- OFFICE (1166, 139 SF)
- OFFICE (1167, 139 SF)
- OFFICE (1168, 139 SF)
- OFFICE (1169, 139 SF)
- OFFICE (1170, 139 SF)
- OFFICE (1171, 139 SF)
- OFFICE (1172, 139 SF)
- OFFICE (1173, 139 SF)
- OFFICE (1174, 139 SF)
- OFFICE (1175, 139 SF)
- OFFICE (1176, 139 SF)
- OFFICE (1177, 139 SF)
- OFFICE (1178, 139 SF)
- OFFICE (1179, 139 SF)
- OFFICE (1180, 139 SF)
- OFFICE (1181, 139 SF)
- OFFICE (1182, 139 SF)
- OFFICE (1183, 139 SF)
- OFFICE (1184, 139 SF)
- OFFICE (1185, 139 SF)
- OFFICE (1186, 139 SF)
- OFFICE (1187, 139 SF)
- OFFICE (1188, 139 SF)
- OFFICE (1189, 139 SF)
- OFFICE (1190, 139 SF)
- OFFICE (1191, 139 SF)
- OFFICE (1192, 139 SF)
- OFFICE (1193, 139 SF)
- OFFICE (1194, 139 SF)
- OFFICE (1195, 139 SF)
- OFFICE (1196, 139 SF)
- OFFICE (1197, 139 SF)
- OFFICE (1198, 139 SF)
- OFFICE (1199, 139 SF)
- OFFICE (1200, 139 SF)
- OFFICE (1201, 139 SF)
- OFFICE (1202, 139 SF)
- OFFICE (1203, 139 SF)
- OFFICE (1204, 139 SF)
- OFFICE (1205, 139 SF)
- OFFICE (1206, 139 SF)
- OFFICE (1207, 139 SF)
- OFFICE (1208, 139 SF)
- OFFICE (1209, 139 SF)
- OFFICE (1210, 139 SF)
- OFFICE (1211, 139 SF)
- OFFICE (1212, 139 SF)
- OFFICE (1213, 139 SF)
- OFFICE (1214, 139 SF)
- OFFICE (1215, 139 SF)
- OFFICE (1216, 139 SF)
- OFFICE (1217, 139 SF)
- OFFICE (1218, 139 SF)
- OFFICE (1219, 139 SF)
- OFFICE (1220, 139 SF)
- OFFICE (1221, 139 SF)
- OFFICE (1222, 139 SF)
- OFFICE (1223, 139 SF)
- OFFICE (1224, 139 SF)
- OFFICE (1225, 139 SF)
- OFFICE (1226, 139 SF)
- OFFICE (1227, 139 SF)
- OFFICE (1228, 139 SF)
- OFFICE (1229, 139 SF)
- OFFICE (1230, 139 SF)
- OFFICE (1231, 139 SF)
- OFFICE (1232, 139 SF)
- OFFICE (1233, 139 SF)
- OFFICE (1234, 139 SF)
- OFFICE (1235, 139 SF)
- OFFICE (1236, 139 SF)
- OFFICE (1237, 139 SF)
- OFFICE (1238, 139 SF)
- OFFICE (1239, 139 SF)
- OFFICE (1240, 139 SF)
- OFFICE (1241, 139 SF)
- OFFICE (1242, 139 SF)
- OFFICE (1243, 139 SF)
- OFFICE (1244, 139 SF)
- OFFICE (1245, 139 SF)
- OFFICE (1246, 139 SF)
- OFFICE (1247, 139 SF)
- OFFICE (1248, 139 SF)
- OFFICE (1249, 139 SF)
- OFFICE (1250, 139 SF)
- OFFICE (1251, 139 SF)
- OFFICE (1252, 139 SF)
- OFFICE (1253, 139 SF)
- OFFICE (1254, 139 SF)
- OFFICE (1255, 139 SF)
- OFFICE (1256, 139 SF)
- OFFICE (1257, 139 SF)
- OFFICE (1258, 139 SF)
- OFFICE (1259, 139 SF)
- OFFICE (1260, 139 SF)
- OFFICE (1261, 139 SF)
- OFFICE (1262, 139 SF)
- OFFICE (1263, 139 SF)
- OFFICE (1264, 139 SF)
- OFFICE (1265, 139 SF)
- OFFICE (1266, 139 SF)
- OFFICE (1267, 139 SF)
- OFFICE (1268, 139 SF)
- OFFICE (1269, 139 SF)
- OFFICE (1270, 139 SF)
- OFFICE (1271, 139 SF)
- OFFICE (1272, 139 SF)
- OFFICE (1273, 139 SF)
- OFFICE (1274, 139 SF)
- OFFICE (1275, 139 SF)
- OFFICE (1276, 139 SF)
- OFFICE (1277, 139 SF)
- OFFICE (1278, 139 SF)
- OFFICE (1279, 139 SF)
- OFFICE (1280, 139 SF)
- OFFICE (1281, 139 SF)
- OFFICE (1282, 139 SF)
- OFFICE (1283, 139 SF)
- OFFICE (1284, 139 SF)
- OFFICE (1285, 139 SF)
- OFFICE (1286, 139 SF)
- OFFICE (1287, 139 SF)
- OFFICE (1288, 139 SF)
- OFFICE (1289, 139 SF)
- OFFICE (1290, 139 SF)
- OFFICE (1291, 139 SF)
- OFFICE (1292, 139 SF)
- OFFICE (1293, 139 SF)
- OFFICE (1294, 139 SF)
- OFFICE (1295, 139 SF)
- OFFICE (1296, 139 SF)
- OFFICE (1297, 139 SF)
- OFFICE (1298, 139 SF)
- OFFICE (1299, 139 SF)
- OFFICE (1300, 139 SF)
- OFFICE (1301, 139 SF)
- OFFICE (1302, 139 SF)
- OFFICE (1303, 139 SF)
- OFFICE (1304, 139 SF)
- OFFICE (1305, 139 SF)</

1 single office unoccupied  
shared office unoccupied

14 single offices  
1 shared office

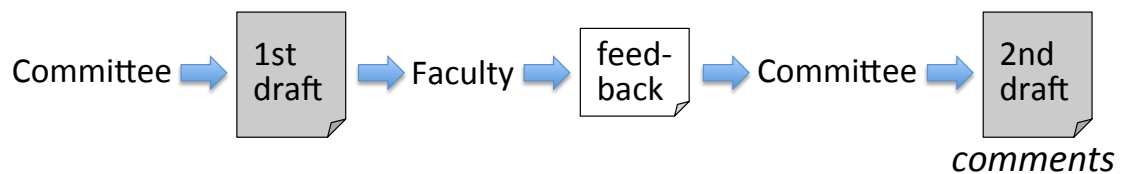
shared office unoccupied



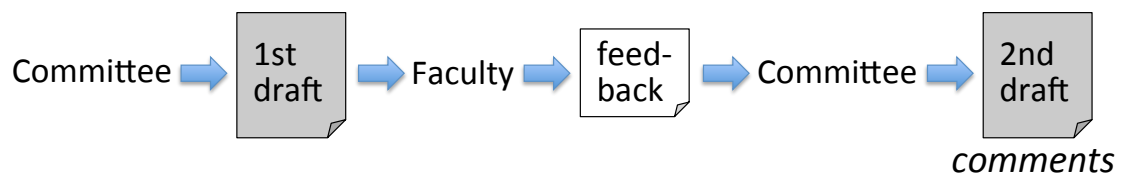
#### 4. SCHOOL T&P GUIDELINES

##### 4. SCHOOL T&P GUIDELINES: Revision process

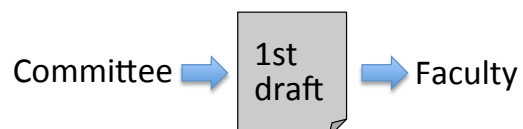
###### *Biennial Performance Review*



###### *Tenure and Promotion*



###### *Other Items / Complete Draft*





#### 4. SCHOOL T&P GUIDELINES: Supervising vs. advising

##### ***Comment***

Graduate Student Supervising vs. Graduate Student Advising:  
I thought the university was moving more towards the latter instead of the former.

##### ***T&P Committee's response***

**Current/old SoCS guidelines:** the two terms are used interchangeably.

**College Guidelines:** “student advising and supervising”. **CA:** “student-supervisor relationship” (8.1), “being available as a supervisor and/or academic advisor” (18.5), “supervision of students” (18.34).

**eCV:** “graduate advising – primary”, “graduate advising – co-advisor”, “graduate advising – committee”.

#### 4. SCHOOL T&P GUIDELINES: Supervising vs. advising

##### ***Comment***

Graduate Student Supervising vs. Graduate Student Advising:  
I thought the university was moving more towards the latter instead of the former.

##### ***T&P Committee's response***

**New SoCS guidelines:** “The term ‘graduate student supervising’ is used when the faculty member is the advisor or co-advisor of a graduate student (e.g., PhD, MSc, GRA),” “The term ‘advising’ is used when the faculty member is not the advisor or co-advisor but is serving on the advisory committee of the student or has a similar role recognized by the supervising member(s).”

#### 4. SCHOOL T&P GUIDELINES: Service for tenure or promotion

##### ***Comment***

Are we disadvantaging faculty who take on a significant service role? The way that the document currently reads, there is no reason to strive for anything above a *Good* rating in SERVICE.

##### ***T&P Committee's response***

Article 21.12 of the CA: "While a candidate must have achieved a satisfactory record of performance in Service, the meritorious performance of these duties shall not compensate for an insufficiently strong performance in Teaching or Scholarship. However, an unsatisfactory record of performance in Service contributions may be an important factor in the denial of Tenure and/or Promotion."

#### 4. SCHOOL T&P GUIDELINES: What's next?

##### ***Questions?***

Come see me by Tue Oct 24, 12pm.

##### ***Article 21.16***

"The criteria for Tenure, Promotion, and Review, including any amendments to the same, will be subject to approval, by secret ballot, by no fewer than two-thirds (2/3's) of the Members of the Department, and also by the College Committee and the Provost."

##### ***Motion***

To approve online voting (Tue Oct 24, 12pm, to Tue Oct 31, 12pm) for the proposed SoCS T&P Guidelines.